

# CCSG: Sustainability project

Faith Toogood

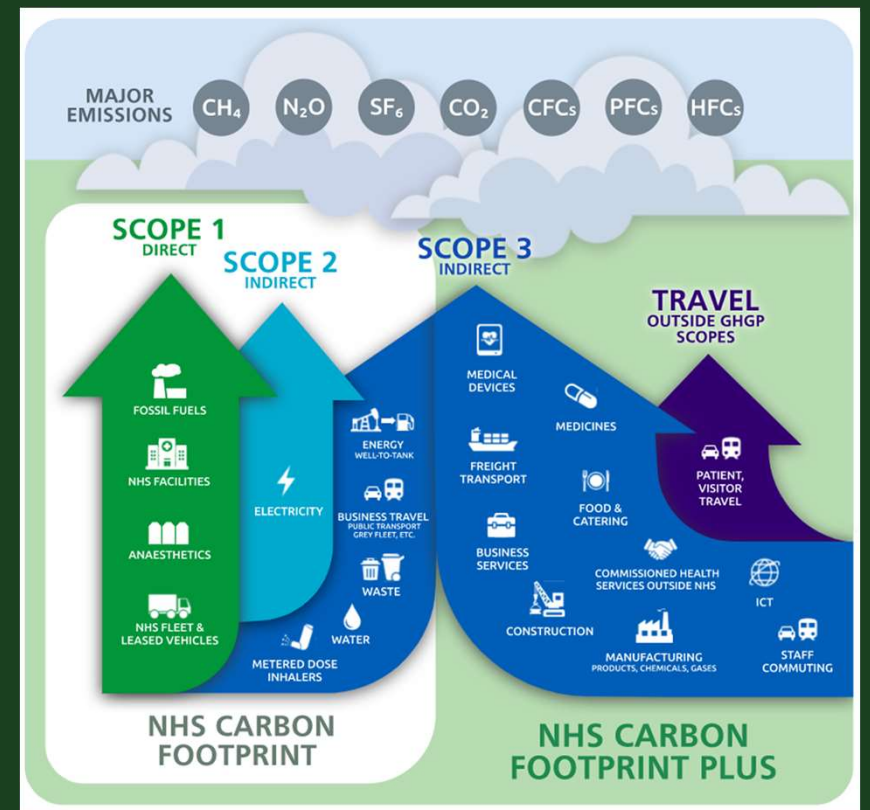
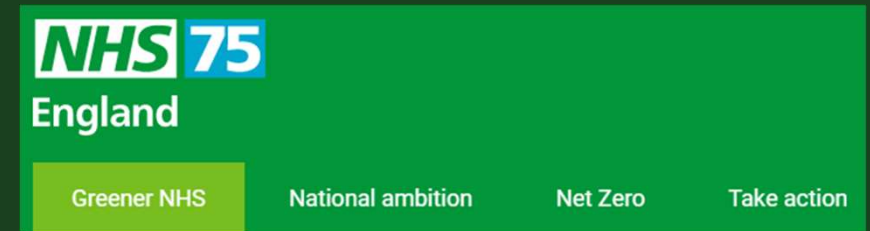


# Setting the scene



In October 2020, the NHS became the world's first health service to commit to reaching carbon net zero, in response to the profound and growing threat to health posed by climate change.

The “Delivering a Net Zero Health Service” report sets out a clear ambition.



# CONTEXT

- Simple idea aligned with several different healthcare agendas related to sustainability;
  - Critical care
  - Greener AHPs
  - NHS net zero.



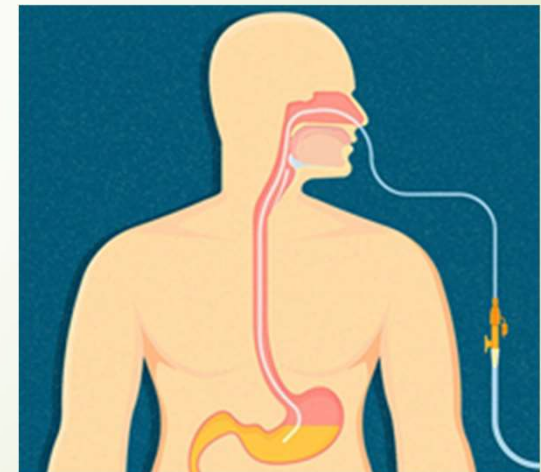
# Biffa



➤ Enteral feed bottles (80g /bottle)

➤ >1900kg enteral feed bottles/year

➤ All currently incinerated in clinical waste





## Recycling feed bottles: Challenges Identified



Nursing workload and responsibilities



Storage of bottles



Budget (or lack thereof!)



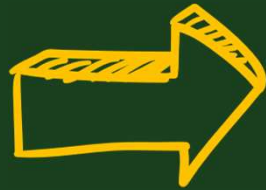
Rinsing



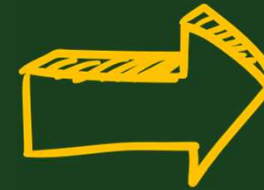
Location /capacity for larger  
collection bins

# The process

Empty bottles stored on individual patient nursing stations



Taken to the sluice at the end of each shift with all other bottles



Bottles rinsed & put into a large bin with a clear plastic liner



Taken with cardboard recycling to the waste area



Placed with the DMR (dry mixed recycling) and removed 1-2 x per day.

## Waste in numbers

**ERIC data (Estates Returns Information Collection)**  
Available online for every hospital

**2022/2023**

<b>Clinical incineration</b>	<b>987.93 tonnes</b>	<b>£617,776</b>	<b>£625/tonne</b>
<b>Dry Mixed Recycling</b>	<b>167.59 tonnes</b>	<b>£33,402</b>	<b>£199/tonne</b>

**Biffa 2024 – DMR £105/tonne (disposal fee) + £105 transport fee per trip**

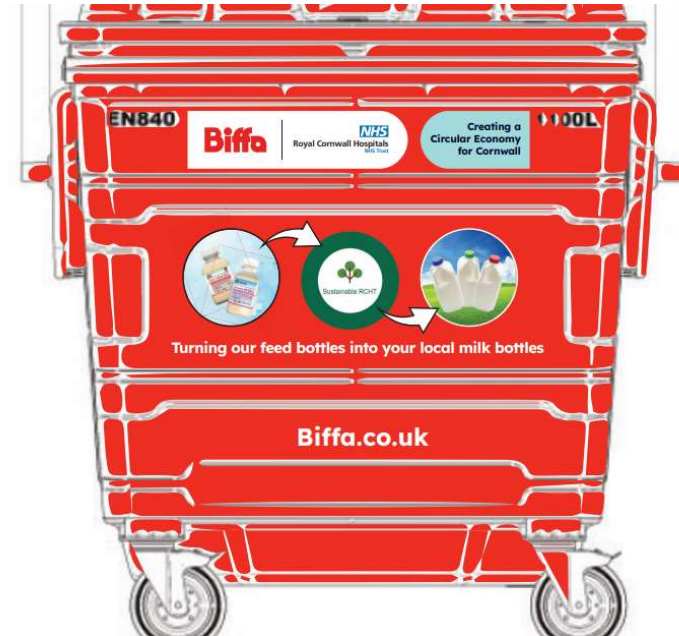
# Could we be doing more?

- All plastic is not equal!
- Segregate HDPE plastic to enter specialist waste stream
- Circular economy where bottles are repurposed into domestic milk bottles.

WHY? Remove the disposal costs, sell back into the economy so the recycling is essentially free, just pay for transport as per DMR







## Take #3 – Evolution of the project

## Feed, Rinse, Bin, Recycle!

Patient is given enteral feed

Feed bottle is rinsed in the sluice to clear the remaining product

Clean and empty bottle is placed into RED BIN with the poster on it

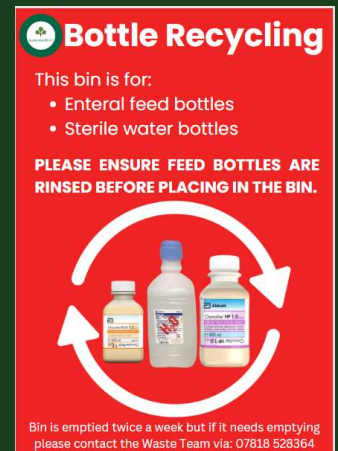
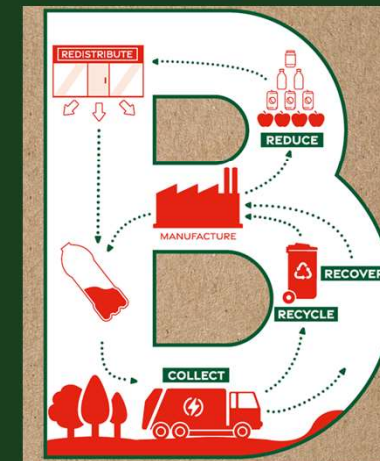
Red bin is emptied and collected by domestic staff member

Contents are placed into central bin ready for collection by BIFFA

- 11,678 enteral feed bottles/year

**BUT...**

- 125,154 sterile water bottles





# Where do we go from here?

Power of this project lies in its scalability

Power also lies with the people

Hospital roll out (already on 5+ wards)

Creating a system for Abbott and Biffa to roll out nationally

Spreading the word and empowering departments

**IT IS POSSIBLE!**



## Lessons Learned



Coordinating with outside agencies



Creating an engaged community who feel valued and part of something



Perfection is neither the starting point nor the goal –  
**JUST GET STARTED!**



Thankyou

[Faith.toogood@nhs.net](mailto:Faith.toogood@nhs.net)

[Peter.Giddings@biffa.co.uk](mailto:Peter.Giddings@biffa.co.uk)